

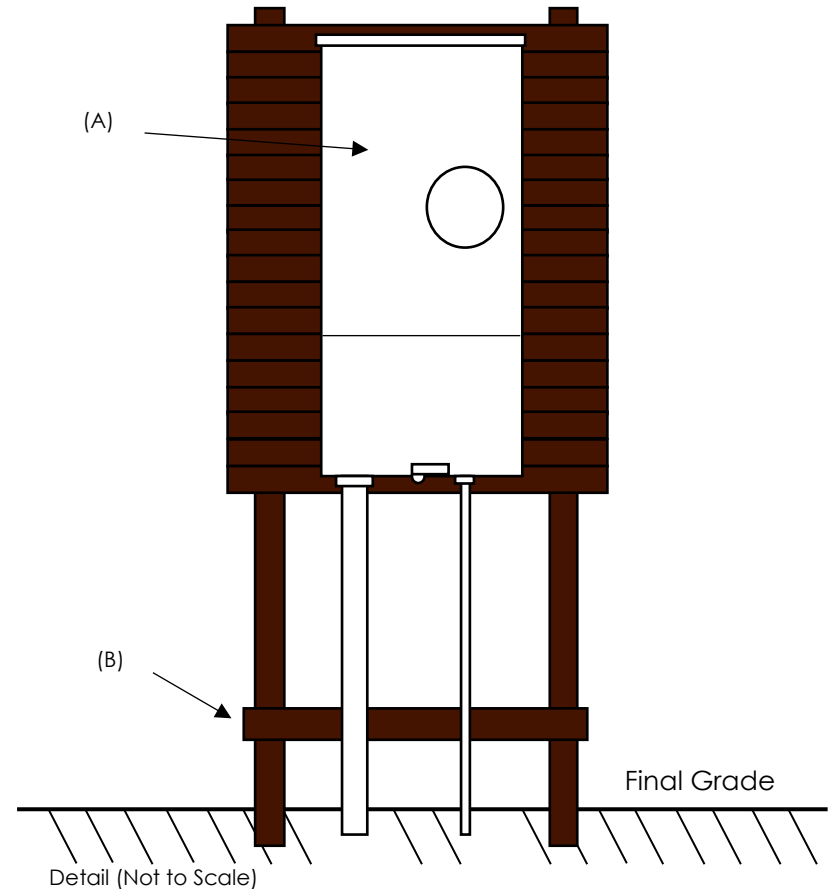
General Notes

1. In order for a new or revamp to a service will be scheduled for work the following is required to be completed
 - a. Site visit with engineering for location and routing.
 - b. Pay Membership and Security Deposits.
 - c. Any Aid-to-Construction is paid.
 - d. Signed and notarization of required easements.
 - e. Member mounted meter and disconnect.
2. Racks need to be set so meter is 5' to 5 ½'. Post can be 4"x4" or 6"x6" with treated material creating a solid back for base to be mounted or rigid metal pipes with Unistrut.
3. Extra brace will need to be set as a kicker for the conduit at the bottom of the rack.
4. Width is unspecified but enough to fit base and disconnect.
5. The trenching/digging of conductor to service requires area to be at or close to final grade.
6. Cooperative shall trench/dig for the service wire to base. The Cooperative will refill the trench with backfill. The member will be responsible for compacting trench and repairing sidewalks, driveways, etc.
7. Meter base needs to meet NEC code or regional code.

Call JULIE-One Call before you dig [800-892-0123](tel:800-892-0123)

Detail Notes

- (A) – Meter Base
(B) – Kicker Board



Underground Service Installation "Rack"
Single Phase 120/240V, Three Wire, 200 AMP